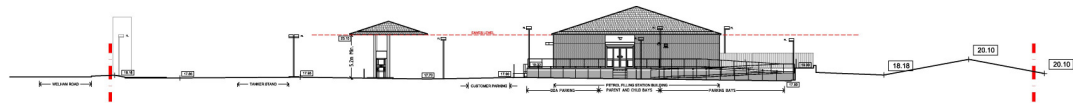
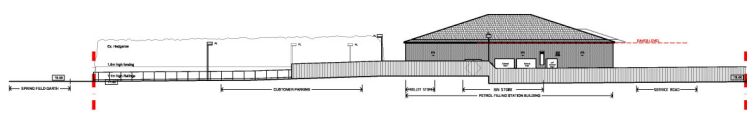


GENERAL NOTES
 This drawing has been prepared for the submission and approval under Town and Country Planning acts.
 All advertisements published are subject to a separate application under the Control of Advertisements legislation.
 Do not scale off this drawing.



NORTH EAST ELEVATION

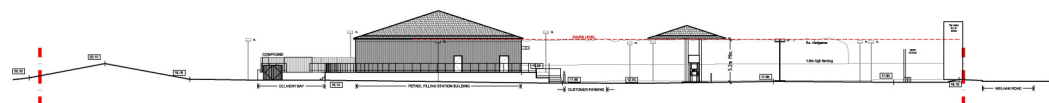


SOUTH EAST ELEVATION

REVISED DOCUMENT

THIS COPY HAS BEEN MADE BY OR WITH THE AUTHORITY OF AVEVAE
 DESIGN & CONSTRUCTION SERVICES LTD AS THE COPYRIGHT HOLDER
 AND PATENT/TRADE MARK RIGHTS THAT ARE PROVIDED AS RELEVANT
 DESCRIPTION TO COPYRIGHT. THIS COPY MUST NOT BE COPIED WITHOUT
 THE PRIOR PERMISSION OF THE COPYRIGHT OWNER.

16.03.2018



SOUTH WEST ELEVATION

- D 06.03.18 Risker Shutters added to ATM machines
- C 02.03.18 Planning Drawings amended to suit Planning Requirements including Building component cladding panel to receive building heat with brick slip installation, canopy, brick columns and canopy to be Approved with alterations
- B 02.03.18 Planning drawings amended to suit Planning Requirements including guttering and fascia removed, recessed gutter indicated to roof pitch
- A 04.03.18 Planning Drawings amended to suit Working Drawings changes, including:
 - Canopy front confirmed and indicated to rear of Building
 - Building walling amended to brick affect walling
 - Recessed guttering added to Building
 - Facia removed to suit canopy

NO	DATE	DESCRIPTION
REVISIONS		
PLANNING		
STATUS		
BP OIL UK Ltd		
Asset Development		
BP OIL UK Ltd		Malfon SF Contract
Asset Development		Malfon Road
Milton Keynes		Norton, Malfon
YO11 9DP		
PROPOSED SITE ELEVATIONS		
DATE:	16.03.2018	REV:
SCALE:	1:25	D
PROJECT:	ANNEX 1-23	
<small>This drawing has been prepared in accordance with BS 2838:1:2017 and shall be prepared, produced, published, printed, reproduced, stored, transmitted, distributed, disseminated, sold, loaned, lent, hired, leased, sold, transferred, or otherwise made available in any form or by any means, electronic or mechanical, including photocopying, recording, or by any information storage and retrieval system, without the prior written permission of the copyright owner.</small>		

A1
 ORIGINAL
 PLOT SIZE

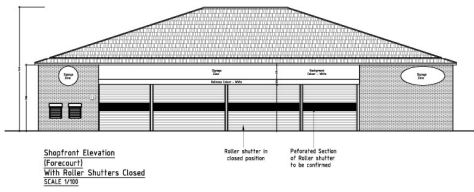


GENERAL NOTES

This drawing has been prepared for the submission and approval under Town and Country Planning acts.

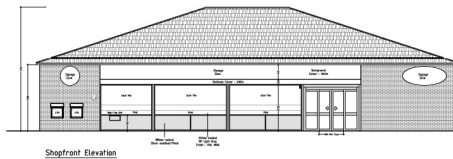
All advertisements published are subject to a separate application under the Control of Advertisements Regulations.

Do not scale off this drawing.

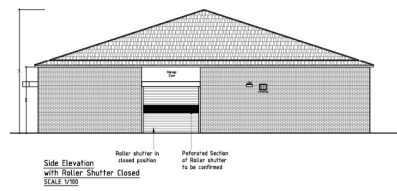


Shopfront Elevation (Forecourt) with Roller Shutters Closed SCALE 1/500

Roller shutter in closed position Preferred Section of Roller shutter to be confirmed

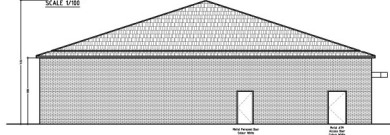


Shopfront Elevation (Forecourt) SCALE 1/500

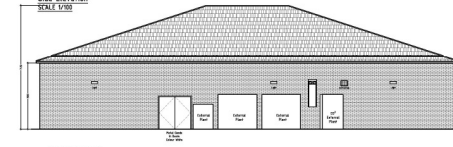


Side Elevation with Roller Shutter Closed SCALE 1/500

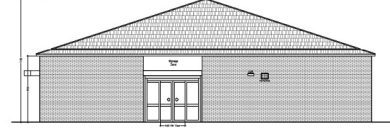
Roller shutter in closed position Preferred Section of Roller shutter to be confirmed



Side Elevation SCALE 1/500



Side Elevation SCALE 1/500



Side Elevation SCALE 1/500



Rear Elevation SCALE 1/500

REVISED DOCUMENT

THIS COPY HAS BEEN MADE BY OR WITH THE AUTHORITY OF THE DISTRICT COUNCIL PURSUANT TO SECTION 47 OF THE COPYRIGHT DESIGN AND PATENTS ACT 1988. HOWEVER, THIS PRINTING OR REPRODUCTION TO COPYRIGHT. THE COPY MUST NOT BE COPIED WITHOUT THE PRIOR PERMISSION OF THE COPYRIGHT OWNER.

16.03.2018

- D 08.02.18 Roller Shutters added to ATM machines. Additional Front and Side Elevations added with roller shutters in their closed positions.
- C 02.02.18 Planning Drawings amended to suit Planning Requirements including Building Company (checking panel to receive building board with brick slip installation) minor points noted and changes to be Approved with panel. Building guttering and fascia removed, recessed gutter indicated to roof profile. Signage Zone above Shopfront reduced to align Canopy and Building Height. Signage Boards to be removed, Canopy panel height reduced. Canopy Eaves and Building Eaves Indicated as noted. Canopy Eaves confirmed and reduced to roof profile of Building. Planning Drawings amended to suit Planning Requirements including Building Height amended to brick offset walling. Proposed signage added to Canopy. Proposed front elevation amended. Adjacent developments and boundaries obtained. Height of wall indicated in neighbouring properties to access across their rear garden.
- B 26.02.18 Planning Drawings amended to suit Working Drawings changes, including Front Elevation - Side screen to entrance door removed. Side Elevation - Side screen to entrance door removed. Signage amended to suit.
- A 04.02.18 Planning Drawings amended to suit Working Drawings changes, including Front Elevation - Side screen to entrance door removed. Side Elevation - Side screen to entrance door removed. Signage amended to suit.

NO	DATE	DESCRIPTION
REVIEWS		
PLANNING		
BP OIL UK Ltd Asset Development		
<p>BP OIL UK Ltd Asset Development Mallton Road Norton, Malton YO11 9DP</p>		
PROPOSED BUILDING ELEVATIONS		
DRAWN BY	SF	
CHECKED BY	NJ	
DATE:	16.03.2018	
APPROVED:		
SCALE:	1000 @ A1	
3006 I-24		
D		



A1 ORIGINAL PLOT SIZE